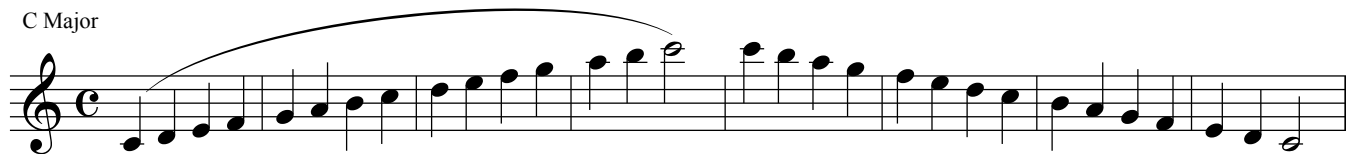


Oboe - Cycle #3

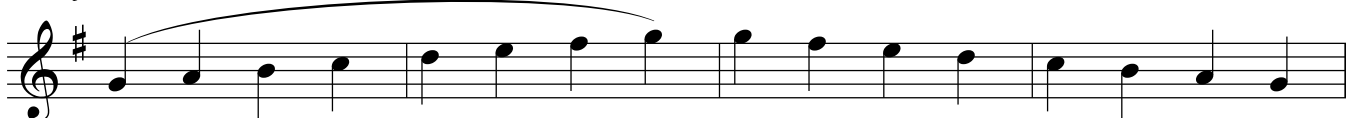
LHS Audition Scales

♩ = 120

C Major



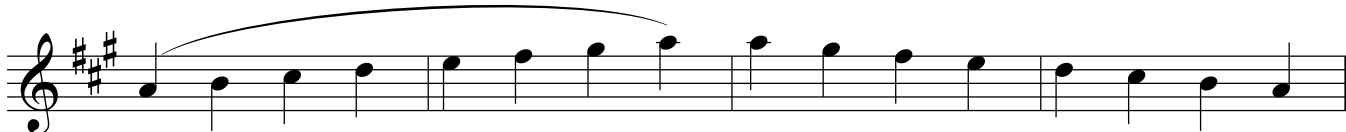
G Major



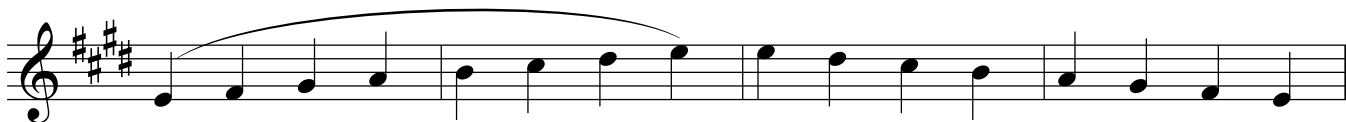
D Major



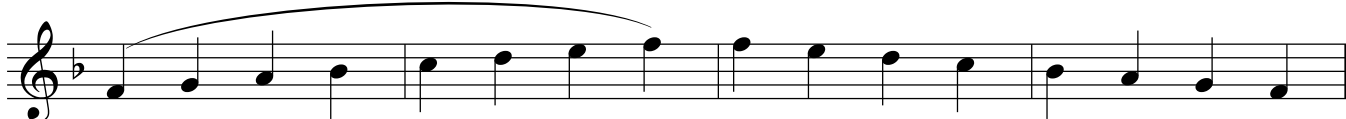
A Major



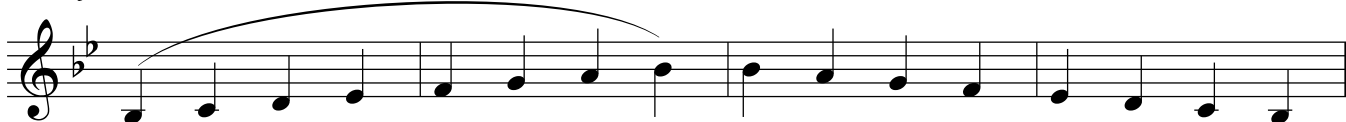
E Major



F Major



Bb Major



Eb Major

Musical notation for the Eb Major scale, ascending and descending. The key signature has three flats (Bb, Eb, Ab). The scale is written on a single staff with a treble clef. The ascending scale starts on Eb and goes up to Eb, and the descending scale starts on Eb and goes down to Eb. A long slur covers the entire scale.

Ab Major

Musical notation for the Ab Major scale, ascending and descending. The key signature has four flats (Bb, Eb, Ab, Db). The scale is written on a single staff with a treble clef. The ascending scale starts on Ab and goes up to Ab, and the descending scale starts on Ab and goes down to Ab. A long slur covers the entire scale.

Full Range Chromatic

Musical notation for the Full Range Chromatic scale, ascending and descending. The scale is written on a single staff with a treble clef. The ascending scale starts on C and goes up to C, and the descending scale starts on C and goes down to C. A long slur covers the entire scale.

Sonata No. 1 - G.F. Handel

Adagio

Musical notation for Sonata No. 1 - G.F. Handel, Adagio, measures 65-70. The key signature has three flats (Bb, Eb, Ab). The notation is written on a single staff with a treble clef. Measure 65 starts with a piano (*p*) dynamic. The music features a series of slurs and trills. Measure 70 includes a trill (*tr*) and a fermata. The notation is written on a single staff with a treble clef.